

Welcome

TAM Gala 2016

Saturday, November 12, 2016
Hotel Murano

1



Philadelphia Getaway

This is your chance to experience the astounding art, architecture, and history of the City of Brotherly Love with a much-deserved getaway! Visit the world-renowned collections at The Barnes Foundation and Philadelphia Museum of Art. Enjoy a delectable dinner for two at the critically acclaimed Vetri Family restaurant, Vetri Ristorante, which earned Chef Marc Vetri the 2005 James Beard Award for "Best Chef Mid-Atlantic." Cap your adventure with a luxurious hotel stay at the historic Marriott Philadelphia Downtown.

Package Includes:

- Dinner for two (2) at Vetri Ristorante and a Marc Vetri cook book
- Guest passes for two (2) to the Barnes Foundation and Philadelphia Museum of Art, plus guided tour of both facilities
- Gift certificate for Marriott hotel accommodations
- Four (4) one-way Southwest Airlines tickets (may be combined for roundtrip travel)

Donor: The Barnes Foundation, Philadelphia Museum of Art, Southwest Airlines, TAM

Value: \$1,530

2



Jeremy Mangan

One Night Only, 2016. Oil and acrylic on panel, 18 × 36 inches.

“My paintings operate in a landscape where myth must contain fact, where promise and beauty continually grapple with melancholy and isolation.” –Jeremy Mangan

Strongly influenced by the Puget Sound region, local artist Jeremy Mangan aims to capture “moments of a story of motivations and activities, always in tension: strange yet familiar, haunting yet beautiful, mournful yet celebratory.” In 2005, Mangan earned a master of fine arts in painting from Hunter College, New York, as a Jacob Javits Fellow. He has received numerous awards, grants, and fellowships, including a Fulbright Fellowship, Artist Trust Fellowship, and the Foundation of Art Award from the Greater Tacoma Community Foundation. Recently, this imaginative artist’s work was featured in TAM’s 2016 exhibition, *NW Art Now @ TAM*. Mangan is represented by JGO Gallery in Park City, Utah. He lives and works in Tacoma, Washington.

Donor: Jeremy Mangan

Value: \$3,000

3



Victoria Adams

Lowlands #116, 2013. Oil on linen, 24 × 24 inches.

“My paintings of the landscape, offering panoramic views of the sky and land, take their cue from the early Dutch, German, English and French landscape traditions. I’m strongly influenced by the American Luminist and Hudson River School painters as well. Through my paintings, I express my love of being out in nature by creating scenes that spring from my imagination. I appropriate and refashion elements from the earlier landscape traditions into new images as I paint. Through my work I hope to reaffirm the importance of being truly imbedded in the landscape even for a moment as an essential human need.” -Victoria Adams

Victoria Adams is an American Contemporary Landscape painter working in oil and wax on linen. She finds inspiration for her primary subject matter—the sky, weather, panoramic land vistas, reflective waters, and deep atmospheric space—in the natural world of the Pacific Northwest where she lives and works near Seattle, Washington on Vashon Island.

Donor: Victoria Adams

Value: \$5,500

4



Progressive Dinner in Lakewood, Washington

Back by popular demand, this enchanted feast on picturesque Gravelly Lake will be a night to remember! You and seven guests will enjoy a magical evening filled with bubbles, wine and hors d'oeuvres at the charming home of Kathy McGoldrick. Your gracious host will have you relaxed and ready to sail away on the Tucci's luxurious Gravelly Lake party barge as you make your way to an enticing and delectable dinner hosted by Clara Ladd and David Graves. Enjoy every scrumptious bite—and don't forget to leave room for dessert. After dinner, you will embark on a scenic tour of the lake accompanied by your final sweet course. This fabulous, old fashioned way to spend an evening is being made new again, by land and by sea. Ahoy, and bottoms up!

Specifications: For up to eight (8) guests

Date: Friday, July 28, 2017

Donor: TAM Trustee Clara Ladd and David Graves,

Kathy McGoldrick, Tim and Barbara Tucci

Value: Priceless

5



Skiing and Snowboarding Vacation at California's Premier Mammoth Mountain Resort

Revel in the majesty of snow-capped peaks, alpine lakes, and stunning pines with a three-night stay at one of the top winter destinations in the United States. Mammoth Mountain averages more than 400 inches of snow and over 300 days of sunshine per year, making this California resort town a true winter wonderland. Stay at Jeff Williams and Mark Pinto's cozy ski-in, ski-out condo located right on the mountain. This incredibly convenient dwelling is just a short gondola ride from the Village at Mammoth for shopping, fine dining, or relaxing in one of the area's many natural hot springs.

Package Includes:

- Roundtrip airfare for two (2) on Alaska Airlines
- Non-holiday three (3) night stay during the 2016-2017 season (mutually agreed upon date)
- Accommodations for up to eight (8) guests

Donor: TAM Trustee Jeff Williams and Mark Pinto, Alaska Airlines
Value: \$3,557

6



Private Tour of Pilchuck Glass School with TAM's Chief Curator Rock Hushka

Seize this rare opportunity to see the inner workings of the illustrious Pilchuck Glass School—an exclusive treat as the famed Stanwood campus is not generally open to the public. Nestled in the foothills of the Cascade mountain range, this international center for arts education promises visual delights in both art and nature. TAM's Chief Curator Rock Hushka will provide insight and expertise as he leads your group on a guided tour. Embrace the opportunity to hear unique perspectives and interesting stories about many of the artists who trained at Pilchuck, and learn more about the indelible impact their work has made on the ever-expanding international community of studio glass artists.

Specifications: For up to five (5) guests; mutually agreed upon date in early May through mid-September 2017.

Donor: Pilchuck Glass School, TAM

Value: Priceless

7



Martin Blank

Ring of Desire, 2000. Hot sculpted glass with copper leaf and stone ground, 20 × 19 × 11 inches.

The idealized, heroic figure has been an indispensable theme in classical and contemporary art, informing our conception of beauty, grace, and strength. The influence of this classical model is undeniably evident in Martin Blank's work, yet his sculptures in glass suggest a more expressive, spiritual mood, subtly revealed through the layering of color and texture achieved through his unique hot-sculpting technique.

Martin Blank received his master of fine arts degree from the Rhode Island School of Design in 1984. At this time, he joined the Chihuly team and worked integrally with him for 11 years. His works have been collected by major museum including the Museum of Fine Arts, Boston, and the Corning Museum of Glass. His major installation *Fluent Steps* is currently installed on the plaza of Museum of Glass.

Donor: Traver Gallery

Value: \$14,000

8



Wine from George Weyerhaeuser Jr.'s Cellar

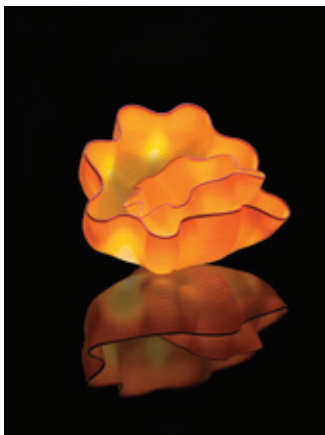
Oenophiles rejoice in this singular chance to sample a diverse collection of rare and fine wines. This charming assortment features eleven deluxe vintages which are sure to enhance any special occasion. Enjoy indulging with friends and family as you elevate a simple get-together to an unforgettable experience.

2000 Chateau Margaux
2010 Leonetti Reserve
2010 Chateau Lynch Bages
2008 The Watcher Fetish Barossa Valley Shiraz
2009 Leonetti Cabernet Sauvignon
2010 Rotie Cellars Southern Blend
2006 McGavick Winery Merlot
2009 Barons V Petit Barone
2007 Saviah Cabernet Sauvignon
2005 Kongsgaard Cabernet Sauvignon
2004 Chateau d'Yquem Half Bottle

Donor: Kathy McGoldrick

Value: \$1,510

9



Dale Chihuly

Saffron Seaform Studio Edition, 2013.

Blown glass, 9 × 10 × 10 inches.

“The Seaforms call forth associations with water, marine life and movement without depicting them, and that’s why they so persuasively affect us as art.” –art critic Joan Seeman Robinson

Dale Chihuly grew up surrounded by the waters of Puget Sound, so it is not surprising that his work has been influenced by the sea. The artist himself has noted that “as soon as I saw the Baskets begin to look like shells and things from the sea, I pushed the idea of the transparency of the glass and the sea and the water...and it all fit together in the forms.” Animated and complex, the Saffron Seaform is a fluent example of Chihuly’s Seaform series. A thin crimson body wrap is skillfully applied to each piece of this two-part composition, providing a vivid juxtaposition to the rich honeyed yellow. This contrast extends the dimensional ebb and flow of the sculpture’s undulating ripples and radial design.

Donor: TAM Emeritus Trustee Dale Chihuly and Chihuly Studio

Value: \$7,000

10



Two (2) Reservations on the 2017 TAM Patron Trip to New Orleans

Bask in the intoxicating jazz, exquisite cuisine, and relaxed charm of The Big Easy! Each year, TAM Patron members are invited to travel with knowledgeable museum staff and other art enthusiasts to explore destinations around the country. From April 20-23, 2017, visit the marvelous city of New Orleans, Louisiana, with delightful and expert guides Stephanie Stebich, TAM's Executive Director, and Samantha Kelly, TAM's Director of Education.

This fantastic trip will give you access to exclusive, behind-the-scenes experiences not available to the public. Enjoy special guided tours of the New Orleans Museum of Art and the Ogden Museum of Southern Art, visit outstanding art galleries, and get an insider's look at amazing private art collections and luscious gardens. Cap it all off by enjoying the city's renowned cuisine and energetic nightlife.

Specifications: For up to two (2) guests

Date: Thursday, April 20 through Sunday, April 23, 2017

Donor: Tacoma Art Museum

Value: \$7,500

11



Tour and Party at Pohlman Knowles Studio and Garden in West Seattle

Join award-winning glass artists Jenny Pohlman and Sabrina Knowles at their West Seattle home and studio for an enchanted garden party. Enjoy wine and hors d'oeuvres as the pair shares insights into what drives their collaboration and the inspiration behind their work. You and your fortunate friends will go behind-the-scenes with a tour of their studio to see the progression of their ideas along with their newest creations.

Specifications: Tour and party for up to sixteen (16) guests; mutually agreed upon date (best dates in summer or fall for optimal garden experience).

Donor: Jenny Pohlman and Sabrina Knowles

Value: \$1,500

12



Robert Motherwell

AFRICA SUITE: AFRICA 8 (CR 76), 1970. Screen print on J. B. Green paper, 40¾ × 28¾ inches, edition 14 of 150, framed.

“The emergence of abstract art is a sign that there are still men of feeling in the world. Men who know how to respect their inner feelings, no matter how irrational or absurd they may first appear.”
–Robert Motherwell

As the youngest member of the New York School and the inadvertent spokesman for his generation of artists, Motherwell was often referred to as the “Dean of American Painters.” Throughout his prolific career, the Aberdeen, Washington-born artist produced a remarkable body of work that ranks among the most notable achievements in postwar American art. Inspired by his time spent with a group of exiled Parisian surrealists, Motherwell was captivated by the metaphysical and the subconscious. His “Africa Suite” was a group of ten works selected from a series of ink-on-paper drawings. To achieve the silhouettes in the final screenprints, the artist reworked with white acrylic and paper masking.

Donor: Greg Kucera Gallery

Value: \$6,000

13



Dinner with Top Northwest Chef Monique Barbeau in Lakewood, Washington

Indulge yourself with a culinary feast at the lovely Lakewood home of Kathy McGoldrick. James Beard award-winning chef Monique Barbeau will prepare this fantastic multi-course dinner for you and your lucky guests. Barbeau has worked for three New York City four-star restaurants: The Quilted Giraffe, Le Bernardin, and Chanterelle. A member of the Seattle Chapter of Les Dames d'Escoffier International, a worldwide philanthropic society of professional women leaders in the fields of food, this distinguished chef consults for local area restaurants.

Barbeau will work with you to individually design a menu and pair each dish with a fabulous wine (some from George Weyerhaeuser Jr.'s cellar!). This relaxing evening filled with good friends, delicious food, and sparkling conversation will be a night to remember.

Specifications: Dinner for up to eight (8) guests; mutually agreed upon date; enjoy by Sunday, November 12, 2017.

Donor: Kathy McGoldrick

Value: Priceless

14



Lucinda Parker

Upper Coe, 2015. Gouache on gessoed masonite,
14 × 22 inches, artist framed.

One of the most admired painters in the Pacific Northwest, Portland based Lucinda Parker is known for her exuberant and colorful abstract works. Her hand-painted, color-coordinated frames enhance her powerful and dynamic compositions. Her work has been exhibited in numerous one-person shows throughout the Pacific Northwest and the nation. The Portland Art Museum honored her with a mid-career retrospective in 1995, and the Boise Art Museum presented a one-person exhibition of her work in 2002.

Parker's work is included in collections throughout the Northwest, including the Hallie Ford Museum of Art at Willamette University, the Portland Art Museum, and Tacoma Art Museum. Public commissions are on view at the Oregon Convention Center, Portland City Hall, and the new federal courthouse in Bakersfield, California, among others.

Donor: Russo Lee Gallery

Value: \$2,800

15



Ron van Dongen

Dahlia Magus, 2002. Toned gelatin silver print,
16 × 20 inches, edition 3 of 50, framed.

“...rarely has the infinite mystery of a dahlia or magnolia been visualized with such hushed reverence and elegiac intensity as in the photographs of Ron van Dongen.” –Steven Jenkins

Leading botanical photographer Ron van Dongen brings a fresh, contemporary approach to his dreamy and ethereal flower portraits. The Venezuelan-born artist has exhibited in galleries in the United States and the Netherlands. van Dongen’s work has been featured in publications such as *Provocateur*, *Foto Nederland*, and *View Camera*. His exquisite, intimate renderings are imbued with a contemporary sensibility and display a command of modern photographic techniques. The artist’s beautiful and intensely detailed images reveal changing textures and subtle plays of light.

Donor: Gail Gibson Gallery

Value: \$2,500

16



Christopher Hoppin

Antonio, 2015. Mixed media, 12 × 16 × 22 inches.

Own a unique piece of joy from one of the Northwest's renowned artists. Beloved sculptor Christopher Hoppin has shared his exuberant work throughout the Puget Sound region. His work has been collected by the White House, Montana State University, and Rotarua Museum of Art in New Zealand among others.

Hoppin's work captures his whimsy, love of color, and "don't take yourself so seriously" attitude. As an artist and teacher, Hoppin develops his witty visual commentary with the help of his brilliant wife, imaginative students, and the stunning environment of Puget Sound.

Donor: Christopher Hoppin

Value: \$2,000

17



Seattle Getaway

Spend two unforgettable nights at Pam Mayer's spectacular condo above Pike Place Market with sweeping views of Elliott Bay. This one bedroom getaway has an outdoor deck and fully-equipped kitchen perfect for cooking fresh produce from the world-famous market. Enjoy a delectable dinner for two at the renowned Dahlia Lounge and a spectacular performance at the historic Paramount Theatre.

Package Includes:

- Dinner for two (2) at Dahlia Lounge and a Tom Douglas cook book
- Two (2) Seattle Theatre Group VIP Paramount Club seats for Dance Theatre of Harlem on Saturday, March 11, 2017
- Two (2) consecutive nights accommodations in downtown Seattle (includes garage parking for one vehicle)

Specifications: VIP Paramount Club seats for performance on Saturday, March 11, 2017, 8 pm; accommodations for two (2); mutually agreed upon date; enjoy by Sunday, November 12, 2017.

**Donor: TAM Trustee Pam Mayer, Seattle Theatre Group, TAM
Value: \$1,339**

THANK YOU *to our wonderful donors*

7 Seas Brewing
Victoria Adams
Alaska Airlines
Anonymous
Beautiful Angle
Bella Simon Salon
Broadway Center for the Performing Arts
Michael Brophy
Chambers Bay Distillery
Chambers Bay Golf
Chateau Ste. Michelle
Chihuly Studio
TAM Emeritus Trustee Dale and Leslie Chihuly
Children's Museum of Tacoma
Crystal Mountain Resort
Curtright and Son Tribal Art
DeLille Cellars
Elemental Pizza
Gail Gibson Gallery
Greg Kucera Gallery
Half Japan
Harbor History Museum
Karen Hackenberg
Heritage Distilling Company
Hilltop Artists
Hope Spring Photography
Christopher Hoppin
Hydroplane and Raceboat Museum
Indochine
Ken Walker Jewelers
TAM Trustee Clara Ladd and David Graves
LeMay - America's Car Museum
London's
Jeremy Mangan
TAM Trustee Pamela Mayer
Kathy McGoldrick
Museum of Glass
Northwest Float Center
Northwest Trek Wildlife Park

Odd Otter Brewing Company
Pacific Bonsai Museum
Peddler Brewing Company
Philadelphia Museum of Art
Pilchuck Glass School
Jenny Pohlman and Sabrina Knowles
Point Defiance Zoological Society
Russo Lee Gallery
Salish Sea Organic Liqueurs
Saltstone Ceramics
Savor Tacoma Creperie
Seattle International Film Festival
Seattle Mariners
Seattle Seahawks
Seattle Sounders FC
Seattle Storm
Seattle Theatre Group
Preston Singletary
Southwest Airlines
TAM Store
Tacoma Glassblowing Studio
Tacoma Little Theatre
Tacoma Rainiers
Tacoma Symphony Orchestra
The Barnes Foundation
The Grand Cinema
The Key Antiques
The Museum of Flight
The Pacific Jazz Institute
Theo Chocolate
Total Wine and More
Traver Gallery
Tim and Barbara Tucci
Turgeon-Raine Jewellers
Rob Vetter
TAM Trustee Jeff Williams and Mark Pinto
Watson's Greenhouse and Nursery
Constance and Phillip Winberry
YMCA of Pierce and Kitsap Counties